



A COMMUNITY TO CALL HOME



SKYEVIEW
FLOOR PLANS

GROUND FLOOR



Ground Floor -
Area : 582.38 sq.m (6,269 Sq.ft.)



SECOND FLOOR



Second Floor -
Area : 834.77 sq.m (8,985 Sq.ft.)



THIRD FLOOR



Third Floor -
Area : 834.77 sq.m (8,985 Sq.ft.)

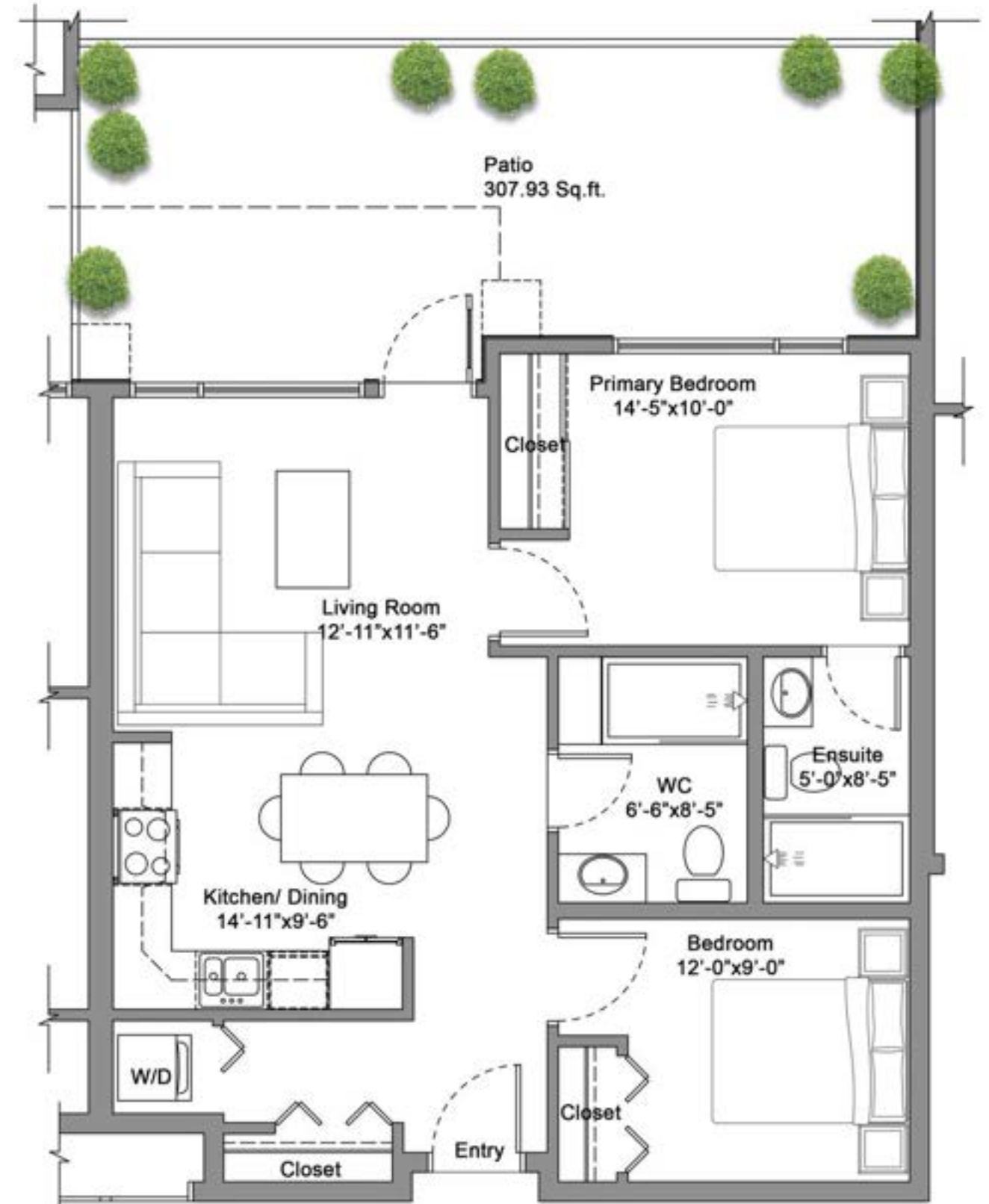
FOURTH FLOOR



Fourth Floor -
Area : 682.78 sq.m (7,379 Sq.ft.)



UNIT C



2 BEDROOM

784 SQ. FT.

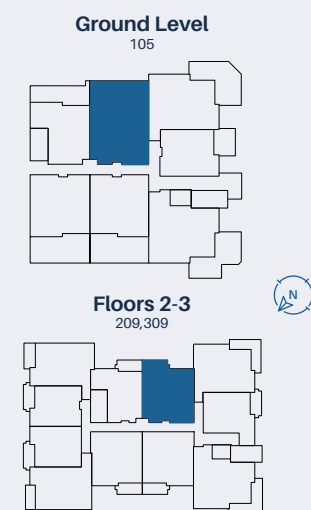
BATHROOMS

2

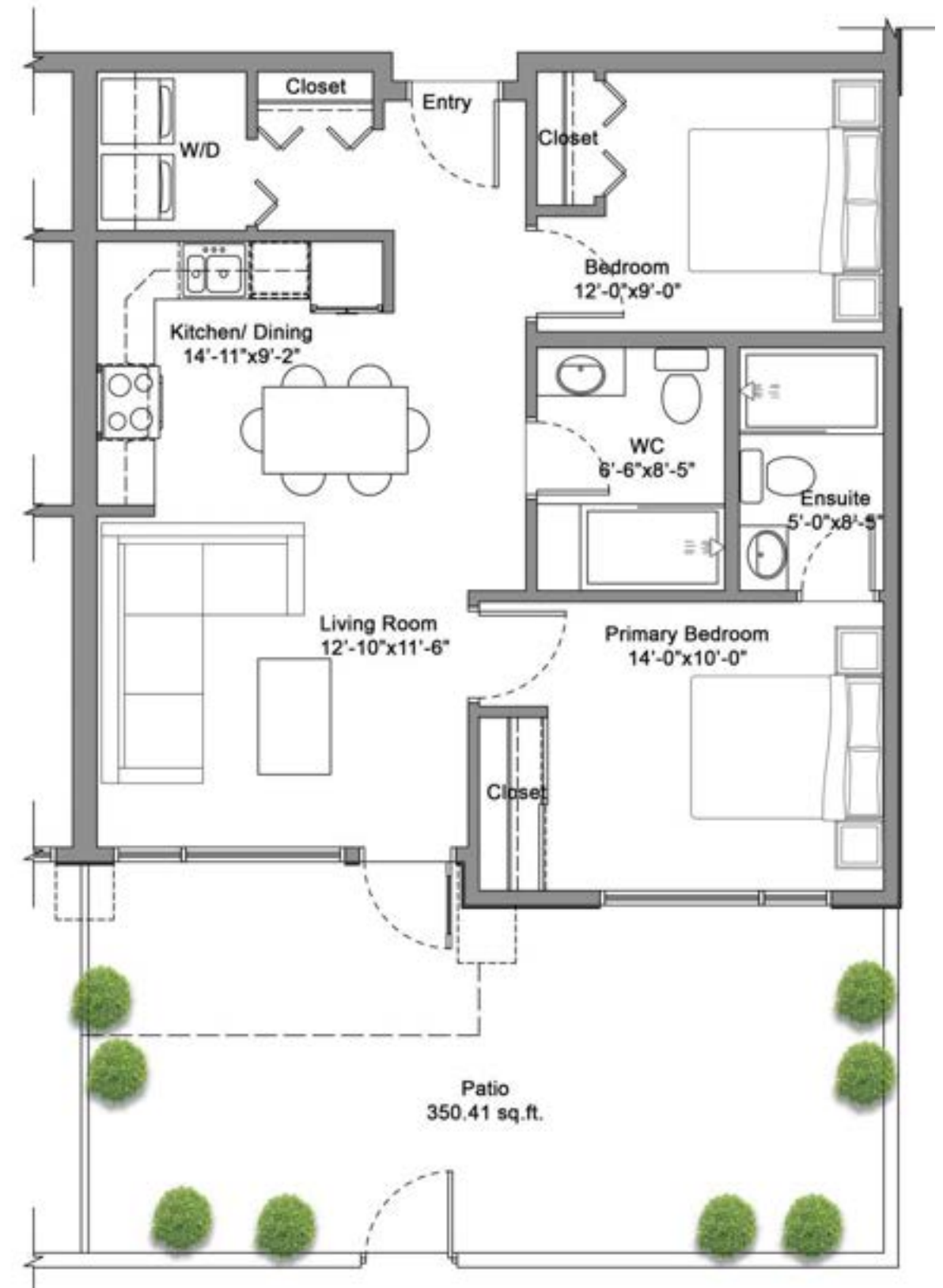
OUTLOOK

SE

This is not an offering for sale which can only be made in conjunction with the delivery of a Disclosure Statement. A filed Disclosure Statement for SkyeView may be obtained from the developer. Illustrations and renderings are proposals only and do not represent the finished building, suites or views. The developer reserves the right to alter plans, designs, specifications and finishes from those shown without notice.



UNIT C1



2 BEDROOM

796 SQ. FT.

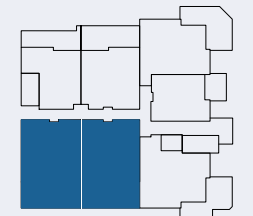
BATHROOMS

2

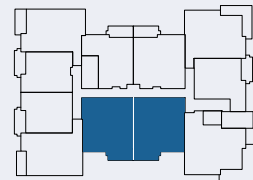
OUTLOOK

NW

Ground Level
102,103



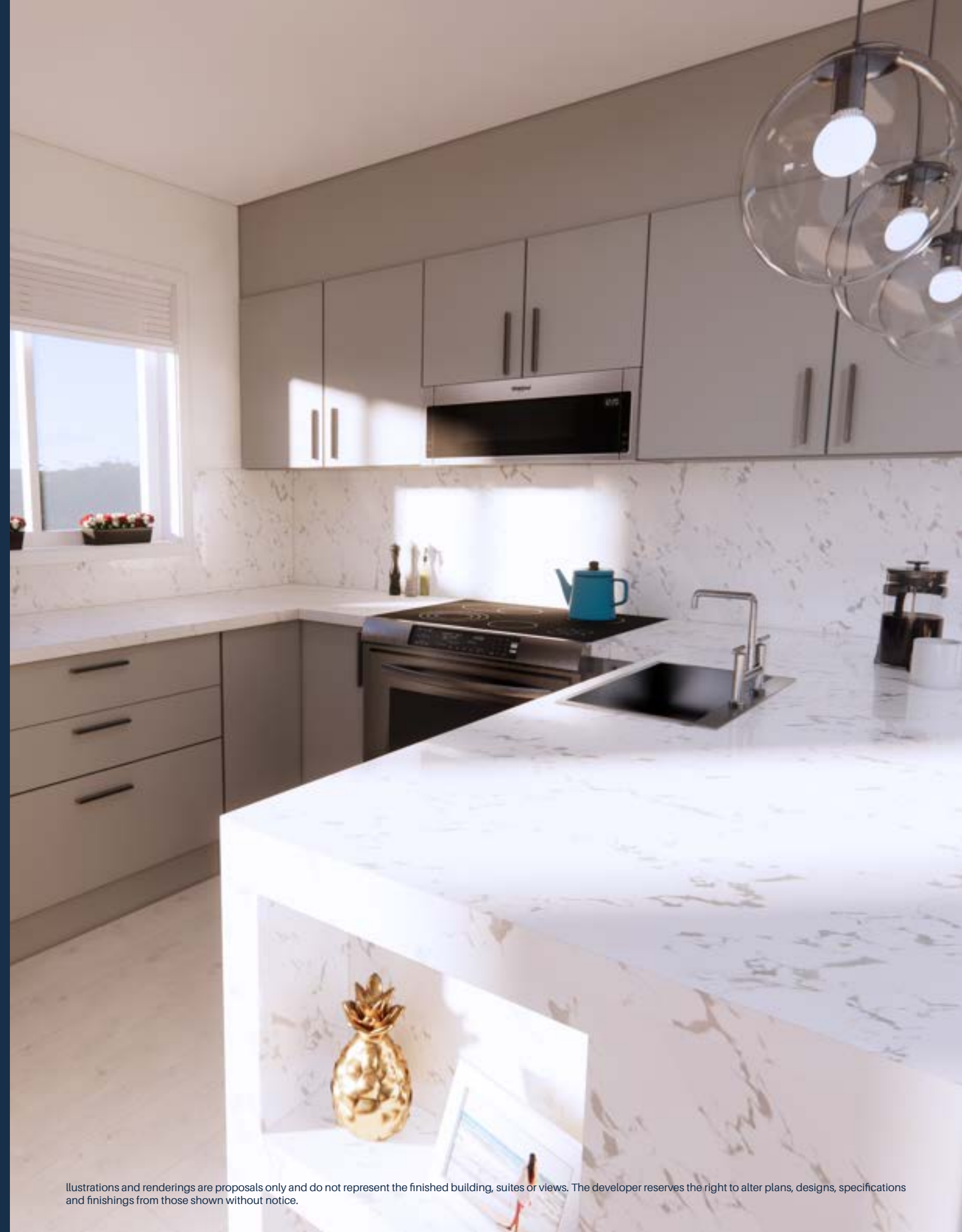
Floors 2-3
202,203,302,303



This is not an offering for sale which can only be made in conjunction with the delivery of a Disclosure Statement. A filed Disclosure Statement for SkyeView may be obtained from the developer. Illustrations and renderings are proposals only and do not represent the finished building, suites or views. The developer reserves the right to alter plans, designs, specifications and finishings from those shown without notice.



SKYEVIEW
BUILDING DETAILS



Illustrations and renderings are proposals only and do not represent the finished building, suites or views. The developer reserves the right to alter plans, designs, specifications and finishings from those shown without notice.

MATERIAL BOARD - DRIFTWOOD



COUNTERTOPS



Bathroom Counter - Quartz



Kitchen Counter- Quartz

FLOORING

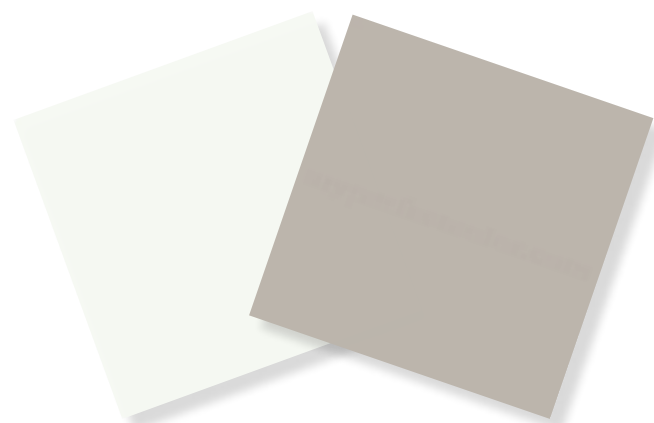


Laminate Flooring



Bathrooms - Marble Tile

PAINT



Chantilly Lace
Eggshell

Gray Owl
Eggshell

MILLWORK



Casing

Baseboard



Crown
Molding

CABINETS



Soft Touch AGT Panel

MATERIAL BOARD - SANDBAR



COUNTERTOPS



Bathroom Counter- Quartz



Kitchen Counter- Quartz

FLOORING

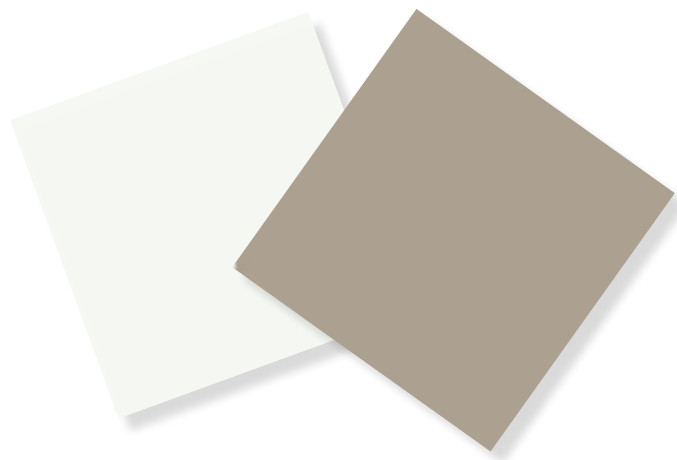


Laminate Flooring



Bathrooms - Marble Tile

PAINT



Chantilly Lace
Eggshell

Thunder
Eggshell

MILLWORK



Casing

Baseboard



Crown
Molding

CABINETS



Soft Touch AGT Panel

APPLIANCES



FRIDGE
Brand - Samsung
15 cu.ft. 28" Counter-Depth
Bottom Mount Refrigerator
with Modern Design



WASHER
Brand - Samsung
2.2 cu. ft. Compact Front
Load Washer with
Super Speed



DRYER
Brand - Samsung
4.0 cu. ft. Capacity Heat
Pump Dryer with
Sensor Dry

DISHWASHER
Brand - Samsung
Digital Touch Control 55
dBA Dishwasher



MICROWAVE
Brand - Samsung
1.1 cu.ft. Low Profile Over the
Range Microwave



ELECTRIC RANGE
Brand - Samsung
6.3 cu. ft. Smart Slide-in
Electric Range



FEATURES



UPSCALE DETAILS

- Beautifully designed interiors by Victoria's Betty Kost from Kost Holdings Ltd.
- Architectural design by Victoria's Alan Lowe Architect Inc.
- Choice of two interior colour palettes of "Light-Sandbar" or "Dark-Driftwood"
- Highly accessible to transit, airport, downtown, and ferries
- Conveniently located close to walking trails
- Public park with children's play area

THE BUILDING

- FOB entry system
- Fire protection system, including in-suite smoke detectors and centrally monitored sprinkler system
- **Home warranty coverage by National Home Warranty for:**
 - 2-year materials and labour warranty
 - 5-year building envelope warranty
 - 10-year structural warranty
- Secure underground parking
- Visitor parking
- Storage lockers and bike room
- Homes will include a sustainable trickle vent system to introduce fresh air circulation, providing added comfort

LIVING SPACES

- Floors 1 through 4 feature 9' ceilings
- Spacious outdoor living
- Highly durable laminate flooring throughout living areas and bedrooms
- Blinds throughout
- In-suite laundry closet with front-loading stacking washer and dryer
- Big windows throughout the unit leads to increased natural light in the space

CHEF INSPIRED KITCHENS

- Quartz countertops
- Tile backsplash
- Under-cabinet lighting in upper cabinets
- Soft-closing cabinet doors and soft-closing drawers
- Under-mounted sink
- Premium, full size appliance package in all units:
 - Samsung 15 cu.ft. 28" counter-depth bottom mount refrigerator
 - Samsung digital touch control 55 dba dishwasher
 - Samsung 1.1 cu.ft. low profile over the range microwave
 - 6.3 cu.ft. smart slide-in electric range
 - Samsung 2.2 cu.ft. compact front load washer with super speed
 - Samsung 4.0 cu.ft. capacity heat pump dryer with sensor dry

LAVISH BATH

- Marble tiled flooring
- Marble tile surrounds showers in all ensuites
- Quartz countertops
- Under-mounted sink
- Master ensuites feature heated floors





NEED FINANCING?



Our Preferred Mortgage Partner

We work closely with clients to offer the most efficient way to get the best-priced and best-structured mortgage.

You can rely on us to use our unrivaled expertise to make the process informative and easy. Whether you are looking to buy your first home, second home or have experience with buying properties, we can help.

Dominion Lending Centres is Canada's largest broker network. As part of Dominion Lending Centres Mortgage Mentors we take pride in offering you the best possible mortgage options and we have 90 lenders we can shop the market to ensure you get a full picture of what's available to you.

Our experience in the industry speaks for itself with many customer service and mortgage agent awards, but we do not rest on our laurels. When you come to us, we always aim to give you confidence that you have made the right decision.

When working with Narish and his staff, the process entails doing what is best for you and making sure that you are equipped with the necessary knowledge to make informed decisions when purchasing home or property.

For more information contact Narish Maharaj or visit our website at: www.dominionmortgagepros.ca



DOMINION LENDING CENTRES

Mortgage Mentors



Narish Maharaj

Licensed Mortgage Agent

Dominion Lending Centres Mortgage Mentors
Toll Free: 1-866-890-5227
Local: 250-900-1162
Fax: 1-866-852-0513
narish@dominionmortgagepros.ca



Register Today At:

skyevview.ca

Project Developer:



tladev.ca